
 Cut out the black lines

 Score dotted lines

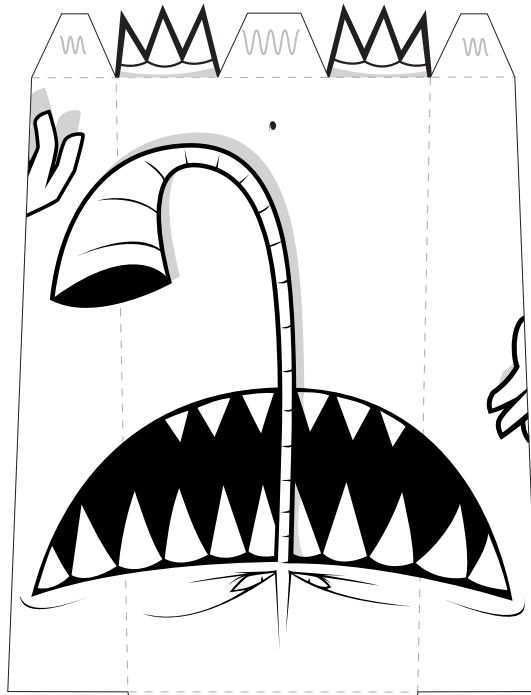
 Glue this parts

General tips:  
Works best on 185-200g paper

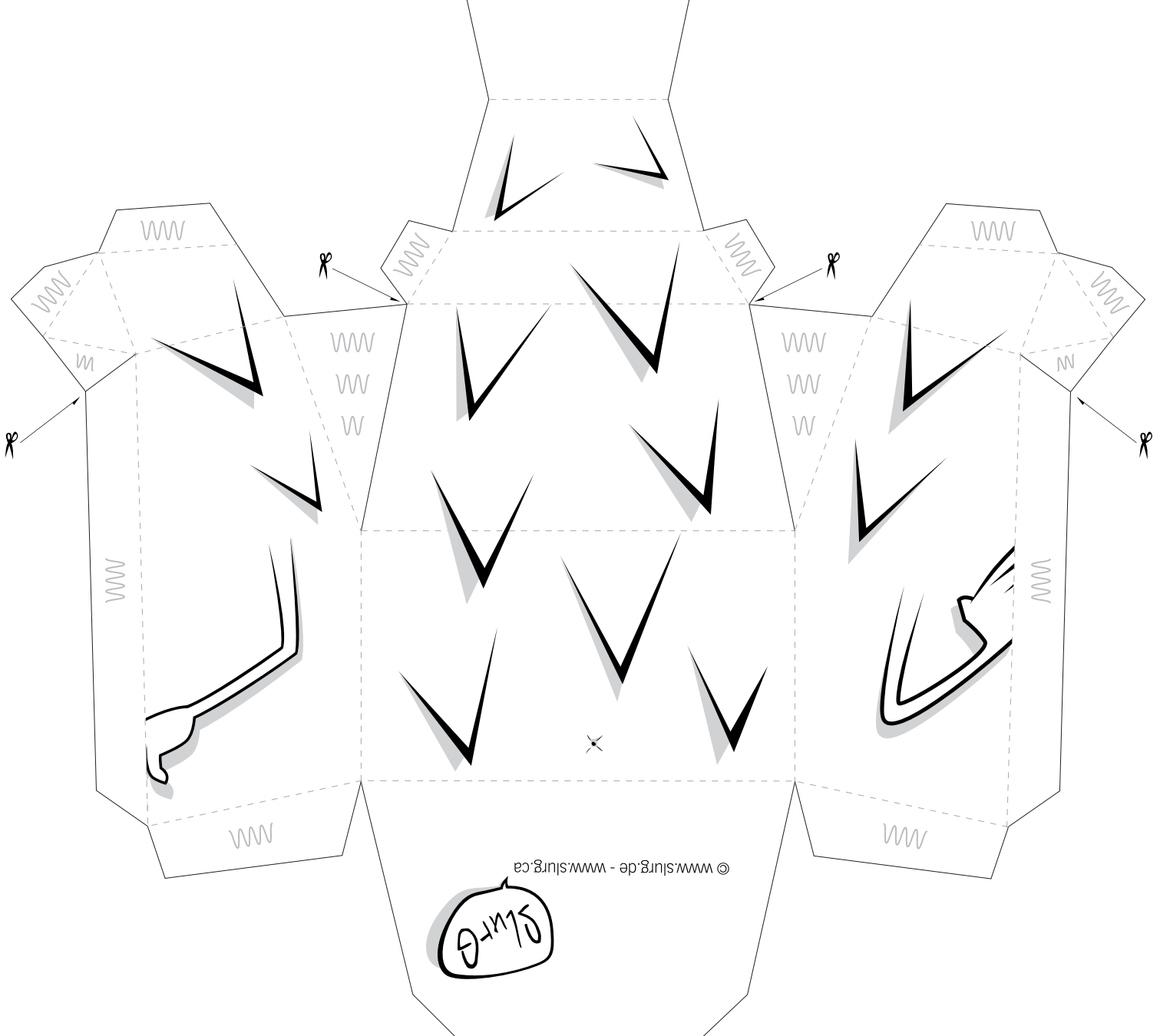
Use Fixogum or doublesided tape as glue

Start at the back, and work towards the front. Keep the bottom section open until the end, cause you might need the hole to press the parts together.

 Don't forget to cut here too!



www.slurg.de - www.slurg.ca  
© Slurg 12/2009



© www.slurg.de - www.slurg.ca